

SR-39 MP 8.6 to MP 21.9, Wasatch National Forest Boundary to 9900 E (Huntsville)



Project

Project ID: 2015019
Improvement Type: Widening
Total Length: 13.3 miles
Long-Range Plan Phase: 4
Description:
 Add one travel lane in each direction
Need:
 Improve capacity and safety by widening road as per results of proposed Phase 1 SR-39 planning study.

Cost

Estimated Cost (2014 dollars)
 Phase 1:
 Phase 2:
 Phase 3:
 Unfunded: \$500,000,000
Total: \$500,000,000

Location

Region 1
 Weber County
 Route SR-39
 Mileposts: 8.6 - 21.9



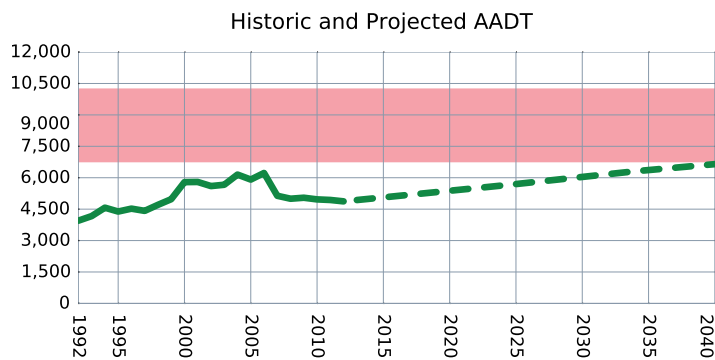
Prioritization

Widening
Total Score: 26.0/100
AADT: 2.0/20
Truck AADT: 1.0/10
Functional Class: 2.0/5
Volume/Capacity: 0/25
Safety Index: 15.0/25
Transportation Growth: 6.0/15

Safety

Crash Rate (3-year Historic): 2.51
Average Crash Rate: 1.71
Severe Crash Rate: 17.58
Average Severe Crash Rate: 9.5

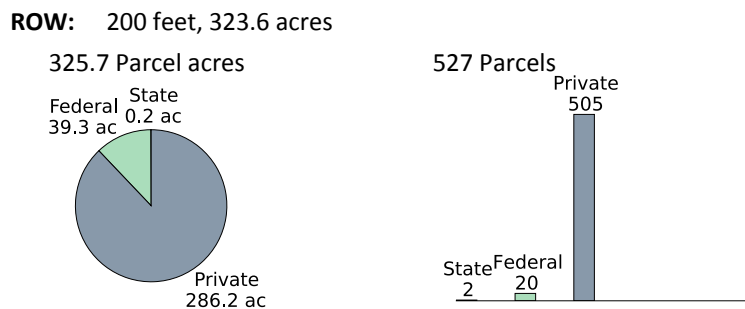
Capacity



— Historical AADT
 - - - Projected AADT without Long Range Plan
 Estimated LOS D without project

Functional Class: Minor Arterial
2013 Truck Traffic: 16.5%

Right-of-Way

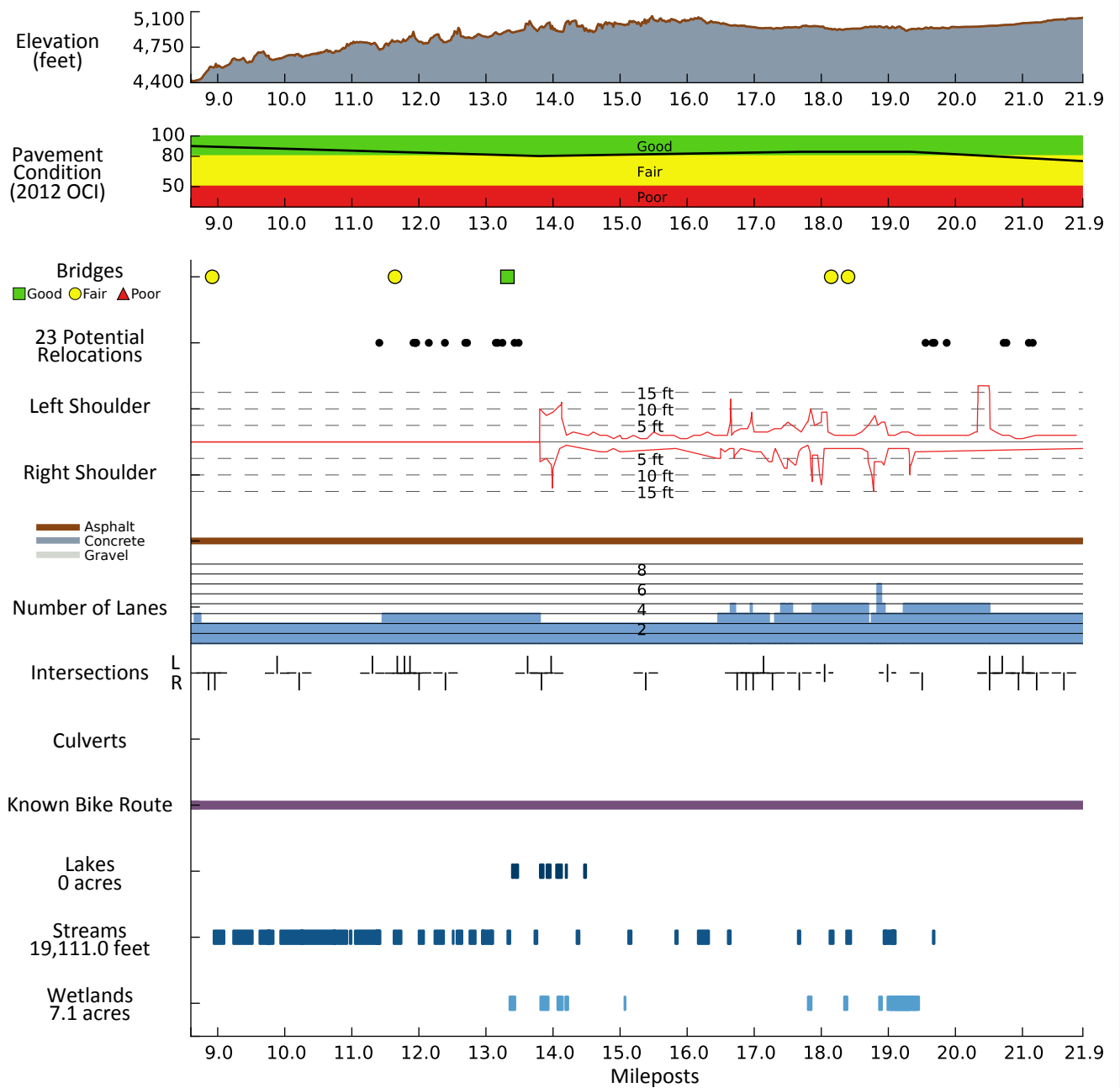


Environmental

Archeological Sites: 26.2 acres
Archeological Surveyed: 85.6 acres
Archeological Not Surveyed: 238.1 acres
Paleontological Sensitivity: 0.0 acres
Rare Plants: 0.0 acres
Wildlife Conservation Species: 276.6 acres

See next page and UPEL report for more information

Existing Conditions



Comments

Over the last 2 years, this portion of the highway has experienced an observed WVC mortality of 61 deer. DWR is interested to discuss options with UDOT representatives to decrease wildlife vehicle collisions in this area.